

Caring for a loved one with tardive dyskinesia (TD)



Finding hope through TD education

Support and information for care partners
of adults living with TD

Actor portrayals



Do you have a loved one who has been diagnosed with tardive dyskinesia (TD)?

Actor portrayals

Tardive dyskinesia (TD) is characterized as persistent, uncontrollable movements anywhere in the body. People who have taken certain mental health medicines (antipsychotics) could be at risk for TD.

Some mental health medicines can cause abnormal dopamine signaling in the brain, which can lead to uncontrollable body movements from TD. These movements are unlikely to improve without treatment.

TD movements can occur anywhere in the body

UPPER BODY

ARMS, TORSO,
HANDS/FINGERS

LOWER BODY

LEGS, FEET/TOES



FACE

MOUTH, LIPS, TONGUE,
JAW, EYES

What medicines can cause TD?

Your loved one may have been prescribed certain mental health medicines (antipsychotics) to treat a condition such as:

- Depression
- Anxiety disorder
- Bipolar disorder
- Agitation
- Schizophrenia /
schizoaffective disorder

Certain prescription medicines used to treat gastrointestinal disorders (metoclopramide and prochlorperazine) may also cause TD.

If your loved one is currently taking antipsychotic medicine, they should not stop, adjust, or switch their medicine without talking to their healthcare provider.

Medications that may cause TD

If your loved one is taking or has taken any of the following medications and is experiencing uncontrolled movements, it's important to share this information with their healthcare provider. Understanding your loved one's treatment history can help their healthcare provider determine if their movements may be TD.

First-generation antipsychotics

- Chlorpromazine (Thorazine)
- Molindone (Moban)
- Fluphenazine (Prolixin)
- Loxapine (Loxitane)
- Haloperidol (Haldol)
- Perphenazine (Trilafon)
- Thioridazine (Mellaril)
- Thiothixene (Navane)
- Trifluoperazine (Stelazine)

Second-generation antipsychotics

- Aripiprazole (Abilify)
- Asenapine (Saphris)
- Brexpiprazole (Rexulti)
- Cariprazine (Vraylar)
- Clozapine (Clozaril)
- Iloperidone (Fanapt)
- Lumateperone (Caplyta)
- Lurasidone (Latuda)
- Olanzapine (Zyprexa)
- Paliperidone (Invega)
- Quetiapine (Seroquel, Seroquel XR)
- Risperidone (Risperdal)
- Ziprasidone (Geodon)

Be sure to discuss any specific questions or concerns with your loved one's healthcare provider.



Actor portrayal

Other medicines that may cause TD

- Prochlorperazine (Compazine, Compro)
- Promethazine (Phenergan, Promethegan, Phenadoz)
- Trimethobenzamide (Tebamide, Tigan)
- Thiethylperazine (Torecan)
- Metoclopramide (Reglan)

The above information is for educational purposes only. It is not intended as an exhaustive list of medications that may cause TD.

What is the impact of tardive dyskinesia (TD)?

The impact of tardive dyskinesia (TD) can go beyond physical ability. Based on a survey, people reported TD can impact them emotionally or socially.*



Emotional impact

TD can change the way people think and feel about themselves.

61% of people with TD reported feelings like anxiety, anger, frustration, and despair, while **52%** reported feelings like low self-esteem, low self-worth, and being a burden to loved ones.



Social impact

People with uncontrollable body movements from TD reported an impact on their social life and activities.

62% of people with TD reported that activities like doing things in public, their relationships with others, and participating in social events were affected by uncontrollable body movements from TD.

*In a survey, 127 people diagnosed with TD were asked, "TD may impact you in many different ways. To what extent has TD impacted you in each of the following areas?" Answers were based on a scale of 1 (not impacted at all) to 7 (extremely impacted). Results shown include answers of ≥ 6 .

Challenges for care partners

The impact of TD isn't limited to people who have it.

In one survey of the 36 care partners, they noted that their loved one's movements had "some" or "a lot" of impact on the care partner's ability to:

BE PRODUCTIVE **58.3%**

SOCIALIZE **55.6%**

TAKE CARE
OF SELF **50%**

PARTICIPATE
IN USUAL
ACTIVITIES **50%**

[†]In a survey, 36 qualified caregivers who noticed abnormal involuntary movements in the past 4 weeks were asked to rank the impact of caring for patients' health on caregivers' lives. Answers were based on a scale of 0 (no impact at all) to 10 (impacted as bad as you can imagine).



Actor portrayal



My loved one has uncontrollable movements; what is the next step?

Actor portrayals

If you notice uncontrollable movements, it's okay to speak up. It could be TD. TD is unlikely to get better on its own; help your loved one take the first step by encouraging them to talk to their doctor and ask about treatment.

Record their movements

- Ask to record a video of your loved one's uncontrollable movements so they can share the video with their healthcare provider during an in-office or telehealth appointment.

Start a discussion

Below are some helpful discussion topics and tips to talk to your loved one about their uncontrollable movements:

- Bring up your loved one's uncontrollable movements in a private, comfortable setting
- Start off by informing your loved one about what you have noticed
- Ask them if they have noticed any uncontrollable movements
- Ask if others have noticed these movements
- See how they are feeling about their movements
- Ask if their work, social life, or daily routine has changed because of their movements
- Ask them to share the impact of their movements with their doctor



It's helpful to remember that your loved one:

- May not be aware that their uncontrollable movements are TD
- Might not want to seek help because they don't understand what's happening with their body



Have a loved one in a long-term care facility?

Actor portrayals

Any person who has recently taken or is currently taking antipsychotics may be at risk for TD. If your loved one lives in a long-term care facility, you may not always be around, but there are ways to support and advocate for your loved one at risk for TD or living with TD.

- Get to know the staff and your loved one's care team to establish trust and a point of contact so you can better advocate for your loved one
- Use a resident assessment or care plan meetings to discuss your loved one's medication history (including antipsychotic use) and screening for TD
- When visiting and spending time with your loved one, make note of any uncontrollable movements and share them with the care team
- Ask the care team to look out for any movements and how they may be impacting your loved one physically, socially, or emotionally
- If movements are noticed, ask your loved one if they are affecting how they are eating, walking, or interacting with other residents

For those in long-term care facilities, TD may negatively impact their daily lives



Judgment

Abnormal and involuntary movements may make your loved one feel misunderstood



Isolation

Abnormal and involuntary movements may cause your loved one to separate themselves from others and group activities



Functional impact

TD movements can impact your loved one's ability to perform daily activities. For example, eating, dressing themselves, tying their shoes, brushing their teeth.



Older adults are especially at risk from the physical impacts of TD, including impaired gait and balance, which can lead to falls.



INGREZZA is proven to reduce TD, **always one capsule, once daily, and #1 prescribed.**

INGREZZA® (valbenazine) capsules is used to treat adults with TD in the face, tongue, and other body parts. It is not known if INGREZZA is safe and effective in children.

IMPORTANT INFORMATION

APPROVED USES

INGREZZA® (valbenazine) capsules or INGREZZA® SPRINKLE (valbenazine) capsules are prescription medicines used to treat adults with:

- movements in the face, tongue, or other body parts that cannot be controlled (tardive dyskinesia).
- involuntary movements (chorea) of Huntington's disease. INGREZZA or INGREZZA SPRINKLE do not cure the cause of involuntary movements, and do not treat other symptoms of Huntington's disease, such as problems with thinking or emotions.

It is not known if INGREZZA or INGREZZA SPRINKLE is safe and effective in children.

SELECT IMPORTANT SAFETY INFORMATION

INGREZZA or INGREZZA SPRINKLE can cause serious side effects in people with Huntington's disease, including: depression, suicidal thoughts, or suicidal actions. Tell your healthcare provider before you start taking INGREZZA or INGREZZA SPRINKLE if you have Huntington's disease and are depressed (have untreated depression or depression that is not well controlled by medicine) or have suicidal thoughts. Pay close attention to any changes, especially sudden changes, in mood, behaviors, thoughts, or feelings. This is especially important when INGREZZA or INGREZZA SPRINKLE is started and when the dose is changed. Call your healthcare provider right away if you become depressed, have unusual changes in mood or behavior, or have thoughts of hurting yourself.

Please see additional Important Safety Information on pages 22-23 and accompanying full [Prescribing Information](#), including Boxed Warning, and [Medication Guide](#).



Simple dosING with INGREZZA

INGREZZA makes dosing simple from the start



Starts at an effective dose



Also available in sprinkle formulation



Always one capsule, once daily



Taken any time

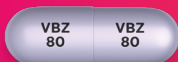
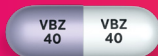


With or without food



Can be added to most stable mental health regimens

Not actual size



INGREZZA and INGREZZA® SPRINKLE (valbenazine) capsules are available in 3 effective dosing strengths. The recommended dose of INGREZZA is 80 mg.

Your loved one's healthcare provider will start them on 40 mg for 1 week and may keep them on 40 mg, or switch them to 60 mg or 80 mg, depending on their treatment needs.

SELECT IMPORTANT SAFETY INFORMATION

Do not take INGREZZA or INGREZZA SPRINKLE if you:

- are allergic to valbenazine, or any of the ingredients in INGREZZA or INGREZZA SPRINKLE.

Please see additional Important Safety Information on pages 22-23 and accompanying full **Prescribing Information**, including Boxed Warning, and **Medication Guide**.



ReducING tardive dyskinesia with INGREZZA

ACHIEVING REMISSION
No or minimal movements
at 48 WEEKS in 59% of people*

WORKS QUICKLY
>5X TD Reduction
at 2 WEEKS vs placebo†

SIGNIFICANT IMPROVEMENT‡
>10X TD Reduction
at 6 WEEKS vs placebo§

*In a post-clinical study evaluation of the KINECT 4 trial, 59% (61/103) of people who completed the trial taking INGREZZA (40 mg and 80 mg) achieved a score of 1 or less for each body part measured with AIMS at Week 48. The results are descriptive in nature.

†Reductions based on average change from baseline to Week 2 on an uncontrollable movement severity scale. Results for INGREZZA (40 mg and 80 mg combined): -1.7 (n=147) vs placebo -0.3 (n=76) in a clinical study.

‡INGREZZA was studied in a 6-week clinical trial. A total of 234 people participated in the study. Results were based on 79 people taking the recommended dose of 80 mg.

§Reductions based on average change from baseline to Week 6 on an uncontrollable movement severity scale. Results for INGREZZA (40 mg and 80 mg combined): -2.5 (n=133) vs placebo -0.1 (n=69) in a clinical study.

SELECT IMPORTANT SAFETY INFORMATION

INGREZZA or INGREZZA SPRINKLE can cause serious side effects, including:

- **Allergic reactions.** Allergic reactions, including an allergic reaction that causes sudden swelling called angioedema, can happen after taking the first dose or after many doses of INGREZZA or INGREZZA SPRINKLE. Signs and symptoms of allergic reactions and angioedema include: trouble breathing or shortness of breath, swelling of your face, lips, eyelids, tongue, or throat, or other areas of your skin, trouble with swallowing, or rash, including raised, itchy red areas on your skin (hives). Swelling in the throat can be life-threatening and can lead to death. Stop taking INGREZZA or INGREZZA SPRINKLE and go to the nearest emergency room right away if you develop these signs and symptoms of allergic reactions and angioedema.

Please see additional Important Safety Information on pages 22-23 and accompanying full [Prescribing Information](#), including Boxed Warning, and [Medication Guide](#).

“If you have uncontrollable movements and you’ve had a history of having medicines for mental health issues, you might have TD. Go to your doctor and advocate for yourself. There are treatments.”

- Forrest, care partner of Moira, who lives with depression and TD.

Moira and Forrest were compensated by Neurocrine Biosciences, Inc. to share his story



“I’m glad I said something to Amy about her uncontrollable movements because even though she was doing it, she had no clue she was doing it. If we didn’t discuss it, we never would’ve made it to where we are now and learned about INGREZZA.”

- Kim (right), care partner of Amy, who lives with depression and TD.

Amy and Kim were compensated by Neurocrine Biosciences, Inc. to share their story



SELECT IMPORTANT SAFETY INFORMATION

INGREZZA or INGREZZA SPRINKLE can cause serious side effects, including:

- **Sleepiness and tiredness that could cause slow reaction times (somnolence and sedation).** Do not drive a car or operate dangerous machinery until you know how INGREZZA or INGREZZA SPRINKLE affects you. Drinking alcohol and taking other medicines may also cause sleepiness during treatment with INGREZZA or INGREZZA SPRINKLE.

Please see additional Important Safety Information on pages 22-23 and accompanying full [Prescribing Information](#), including Boxed Warning, and [Medication Guide](#).



People **taking** INGREZZA can keep **taking** most mental health medicine

Your loved one may ask, “Is it ok to take INGREZZA with my other medications?”

In a clinical study, psychiatric status in people taking INGREZZA® (valbenazine) capsules remained stable overall, including those who also took medicine for:

- Depression
- Schizophrenia/schizoaffective disorder
- Bipolar disorder
- Anxiety disorder

Tell your healthcare provider about all of the medicines you take.



“I’m on a regimen of medicines to control my depression. My TD movements are under control with INGREZZA.”

– Moira, who lives with depression and TD.

Moira was compensated by Neurocrine Biosciences, Inc. to share her story

SELECT IMPORTANT SAFETY INFORMATION

INGREZZA or INGREZZA SPRINKLE can cause serious side effects, including:

- **Heart rhythm problems (QT prolongation).** INGREZZA or INGREZZA SPRINKLE may cause a heart rhythm problem known as QT prolongation. You have a higher chance of getting QT prolongation if you also take certain other medicines during treatment with INGREZZA or INGREZZA SPRINKLE. Tell your healthcare provider right away if you develop any signs or symptoms of QT prolongation, including: fast, slow, or irregular heartbeat (heart palpitations), shortness of breath, dizziness or lightheadedness, or fainting or feeling like you are going to faint.

Please see additional Important Safety Information on pages 22-23 and accompanying full [Prescribing Information](#), including Boxed Warning, and [Medication Guide](#).



SELECT IMPORTANT SAFETY INFORMATION

INGREZZA or INGREZZA SPRINKLE can cause serious side effects, including:

- **Neuroleptic Malignant Syndrome (NMS).** NMS is a serious condition that can lead to death. Call a healthcare provider right away or go to the nearest emergency room if you develop these symptoms and they do not have another obvious cause: high fever, stiff muscles, problems thinking, irregular pulse or blood pressure, increased swelling, or very fast or uneven heartbeat.

Please see additional Important Safety Information on pages 22-23 and accompanying full Prescribing Information, including Boxed Warning, and Medication Guide.



These are not all of the possible side effects of INGREZZA or INGREZZA SPRINKLE. Call your loved one's doctor (if it's an option) for medical advice about side effects. You are encouraged to report negative side effects of prescription drugs to the FDA.

Visit MedWatch at www.fda.gov/medwatch or call **1-800-FDA-1088**

What happens next after your loved one is diagnosed and gets a prescription?

With INGREZZA[®] (valbenazine) capsules, your loved one can keep taking most mental health medicines. If they are currently taking antipsychotic medicine, do not stop, adjust, or switch their medicine without talking to their healthcare provider. Your loved one should continue taking their medicine as prescribed.

Encourage your loved one to stay on track with their treatment

- Have them keep their INGREZZA capsules in the same place so they know where it is
- Ask them to record their TD movements each week
- Encourage them to talk to their healthcare provider about all concerns and questions
- Remind them to take INGREZZA as instructed by their healthcare provider—for some people, INGREZZA may work more gradually
- Have them look for sleepiness or tiredness, which is the most common side effect of INGREZZA
- When it's time to refill their INGREZZA prescription, call the specialty pharmacy if they haven't contacted your loved one

SELECT IMPORTANT SAFETY INFORMATION

INGREZZA or INGREZZA SPRINKLE can cause serious side effects, including:

- **Parkinson-like symptoms.** Symptoms include: body stiffness, drooling, trouble moving or walking, trouble keeping your balance, shaking (tremors), or falls.

Please see additional Important Safety Information on pages 22-23 and accompanying full [Prescribing Information](#), including Boxed Warning, and [Medication Guide](#).



Learn how your loved one can start and stay on track with their treatment and what to expect on their treatment journey. Download the INGREZZA Treatment Guide at [INGREZZA.com/treatmentguide](https://www.ingrezza.com/treatmentguide)

Stay**ING** on track with treatment

Here are some additional ways you can stay engaged to support your loved one on their treatment journey:



Ask to join your loved one at their next appointment—you can help them better understand their healthcare provider's instructions



Call or email your loved one's healthcare provider (if it's an option) and ask them to repeat or explain any information your loved one didn't understand



Get the most out of treatment by signing up to receive emails about INGREZZA at [INGREZZA.com/info](https://www.ingrezza.com/info)

SELECT IMPORTANT SAFETY INFORMATION

Before taking INGREZZA or INGREZZA SPRINKLE, tell your healthcare provider about all of your medical conditions including if you: have liver or heart problems, are pregnant or plan to become pregnant, or are breastfeeding or plan to breastfeed.

Please see additional Important Safety Information on pages 22-23 and accompanying full [Prescribing Information](#), including Boxed Warning, and [Medication Guide](#).



Help**ING** your loved one on their treatment journey

The INBRACE[®] Support Program is designed to help patients who are prescribed INGREZZA[®] (valbenazine) capsules through a range of financial assistance programs. Your loved one's healthcare provider can enroll them in the INGREZZA Start Program by downloading the enrollment form from the INBRACE website and submitting the completed form on their behalf. Please visit [**INGREZZA.com/Support**](https://www.ingrezza.com/Support) for more information.



Copay Savings Card

For those eligible, a Savings Card may be applied automatically at the pharmacy, which may help save money on your loved one's INGREZZA prescription.*

*This offer is valid only for patients who have commercial (nongovernment-funded) insurance. Additional terms and conditions apply.

INGREZZA is available through a select network of specialty and local affiliated pharmacies. A specialty pharmacy provides medicines that aren't typically available at your local retail pharmacy. Once coverage has been authorized, INGREZZA will be shipped directly to you via overnight mail.

SELECT IMPORTANT SAFETY INFORMATION

Tell your healthcare provider about all the medicines you take, including prescription and over-the-counter medicines, vitamins, and herbal supplements. Make sure you tell all of your healthcare providers that you are taking INGREZZA or INGREZZA SPRINKLE. Taking INGREZZA or INGREZZA SPRINKLE with certain other medicines may cause serious side effects. Especially tell your healthcare provider if you: take digoxin or take or have taken a monoamine oxidase inhibitor (MAOI) medicine. You should not take INGREZZA or INGREZZA SPRINKLE if you are taking, or have stopped taking, a MAOI within the last 14 days.

Please see additional Important Safety Information on pages 22-23 and accompanying full [Prescribing Information**](#), including Boxed Warning, and [**Medication Guide**](#).**



INGREZZA Start Program

The INGREZZA Start Program is a free trial (one-month supply) of INGREZZA available for new patients.[†] Your loved one's healthcare provider can enroll them in the INGREZZA Start Program by downloading the enrollment form from the INBRACE website and submitting the completed form on their behalf.

INGREZZA Patient Assistance Program

If your loved one does not have prescription coverage for INGREZZA and lack the financial resources to pay for the medicine, they may be able to receive their prescription at no cost through the INGREZZA Patient Assistance Program.[‡] Your healthcare provider can help you apply for the program or call 1-84-INGREZZA to learn more.

[†]This program is not contingent on a purchase of any kind. Product dispensed under this free trial program may not be submitted for reimbursement to any third-party payer. We reserve the right to modify or cancel the program at any time.

[‡]Additional terms and conditions apply.

**To learn more about the INBRACE® Support Program,
call 1-84-INGREZZA (1-844-647-3992)
8 AM to 8 PM ET, Monday through Friday,
or visit [INGREZZA.com/Support](https://www.ingrezza.com/Support).**

SELECT IMPORTANT SAFETY INFORMATION

The most common side effects of INGREZZA or INGREZZA SPRINKLE in people with tardive dyskinesia are sleepiness and tiredness.

Please see additional Important Safety Information on pages 22-23 and accompanying full [Prescribing Information](#), including Boxed Warning, and [Medication Guide](#).

Important Information

Approved Uses

INGREZZA® (valbenazine) capsules or INGREZZA® SPRINKLE (valbenazine) capsules are prescription medicines used to treat adults with:

- movements in the face, tongue, or other body parts that cannot be controlled (tardive dyskinesia).
- involuntary movements (chorea) of Huntington's disease. INGREZZA or INGREZZA SPRINKLE do not cure the cause of involuntary movements, and do not treat other symptoms of Huntington's disease, such as problems with thinking or emotions.

It is not known if INGREZZA or INGREZZA SPRINKLE is safe and effective in children.

IMPORTANT SAFETY INFORMATION

INGREZZA or INGREZZA SPRINKLE can cause serious side effects in people with Huntington's disease, including: depression, suicidal thoughts, or suicidal actions.

Tell your healthcare provider before you start taking INGREZZA or INGREZZA SPRINKLE if you have Huntington's disease and are depressed (have untreated depression or depression that is not well controlled by medicine) or have suicidal thoughts. Pay close attention to any changes, especially sudden changes, in mood, behaviors, thoughts, or feelings. This is especially important when INGREZZA or INGREZZA SPRINKLE is started and when the dose is changed. Call your healthcare provider right away if you become depressed, have unusual changes in mood or behavior, or have thoughts of hurting yourself.

Do not take INGREZZA or INGREZZA SPRINKLE if you:

- are allergic to valbenazine, or any of the ingredients in INGREZZA or INGREZZA SPRINKLE.

INGREZZA or INGREZZA SPRINKLE can cause serious side effects, including:

- **Allergic reactions.** Allergic reactions, including an allergic reaction that causes sudden swelling called angioedema, can happen after taking the first dose or after many doses of INGREZZA or INGREZZA SPRINKLE. Signs and symptoms of allergic reactions and angioedema include: trouble breathing or shortness of breath, swelling of your face, lips, eyelids, tongue, or throat, or other areas of your skin, trouble with swallowing, or rash, including raised, itchy red areas on your skin (hives). Swelling in the throat can be life-threatening and can lead to death. Stop taking INGREZZA or INGREZZA SPRINKLE and go to the nearest emergency room right away if you develop these signs and symptoms of allergic reactions and angioedema.
- **Sleepiness and tiredness that could cause slow reaction times (somnolence and sedation).** Do not drive a car or operate dangerous machinery until you know how INGREZZA or INGREZZA SPRINKLE affects you. Drinking alcohol and taking other medicines may also cause sleepiness during treatment with INGREZZA or INGREZZA SPRINKLE.

Please see full **Prescribing Information**, including Boxed Warning, and **Medication Guide**.



- **Heart rhythm problems (QT prolongation).** INGREZZA or INGREZZA SPRINKLE may cause a heart rhythm problem known as QT prolongation. You have a higher chance of getting QT prolongation if you also take certain other medicines during treatment with INGREZZA or INGREZZA SPRINKLE. Tell your healthcare provider right away if you develop any signs or symptoms of QT prolongation, including: fast, slow, or irregular heartbeat (heart palpitations), shortness of breath, dizziness or lightheadedness, or fainting or feeling like you are going to faint.
- **Neuroleptic Malignant Syndrome (NMS).** NMS is a serious condition that can lead to death. Call a healthcare provider right away or go to the nearest emergency room if you develop these symptoms and they do not have another obvious cause: high fever, stiff muscles, problems thinking, irregular pulse or blood pressure, increased sweating, or very fast or uneven heartbeat.
- **Parkinson-like symptoms.** Symptoms include: body stiffness, drooling, trouble moving or walking, trouble keeping your balance, shaking (tremors), or falls.

Before taking INGREZZA or INGREZZA SPRINKLE, tell your healthcare provider about all of your medical conditions including if you: have liver or heart problems, are pregnant or plan to become pregnant, or are breastfeeding or plan to breastfeed.

Tell your healthcare provider about all the medicines you take, including prescription and over-the-counter medicines, vitamins, and herbal supplements. Make sure you tell all of your healthcare providers that you are taking INGREZZA or INGREZZA SPRINKLE. Taking INGREZZA or INGREZZA SPRINKLE with certain other medicines may cause serious side effects. Especially tell your healthcare provider if you: take digoxin or take or have taken a monoamine oxidase inhibitor (MAOI) medicine. You should not take INGREZZA or INGREZZA SPRINKLE if you are taking, or have stopped taking, a MAOI within the last 14 days.

The most common side effects of INGREZZA or INGREZZA SPRINKLE in people with tardive dyskinesia are sleepiness and tiredness.

The most common side effects of INGREZZA or INGREZZA SPRINKLE in people with chorea associated with Huntington's disease include sleepiness and tiredness, raised itchy red areas on your skin (hives), rash, and trouble getting to sleep or staying asleep.

These are not all of the possible side effects of INGREZZA or INGREZZA SPRINKLE. Call your doctor for medical advice about side effects. You are encouraged to report negative side effects of prescription drugs to the FDA. Visit MedWatch at www.fda.gov/medwatch or call **1-800-FDA-1088**.

Dosage Forms and Strengths: INGREZZA and INGREZZA SPRINKLE are available in 40 mg, 60 mg, and 80 mg capsules.

Please see full **[Prescribing Information](#)**, including Boxed Warning, and **[Medication Guide](#)**.

Treat**ING** tardive dyskinesia with INGREZZA



INGREZZA[®] (valbenazine) capsules is proven to reduce TD, always one capsule, once daily, and #1 prescribed.



People taking INGREZZA can stay on most mental health medicines.



Starts at an effective dose.



Start by asking your doctor about INGREZZA and visit [INGREZZA.com](https://www.ingrezza.com) or scan the QR code to learn more about treatment.

SELECT IMPORTANT SAFETY INFORMATION

INGREZZA or INGREZZA SPRINKLE can cause serious side effects in people with Huntington's disease, including: **depression, suicidal thoughts, or suicidal actions.** Tell your healthcare provider before you start taking INGREZZA or INGREZZA SPRINKLE if you have Huntington's disease and are depressed (have untreated depression or depression that is not well controlled by medicine) or have suicidal thoughts. Pay close attention to any changes, especially sudden changes, in mood, behaviors, thoughts, or feelings. This is especially important when INGREZZA or INGREZZA SPRINKLE is started and when the dose is changed. Call your healthcare provider right away if you become depressed, have unusual changes in mood or behavior, or have thoughts of hurting yourself.

Please see additional Important Safety Information on pages 22-23 and accompanying full [Prescribing Information](#), including Boxed Warning, and [Medication Guide](#).